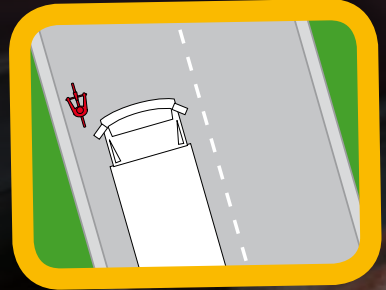


Large vehicles

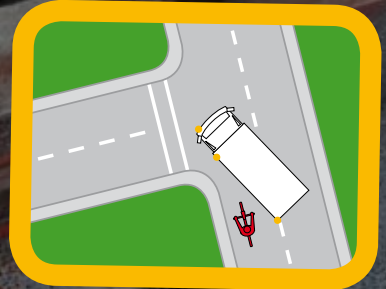
Visibility

- If you can't see my mirrors I can't see you
- Avoid cycling on the front left of vehicles



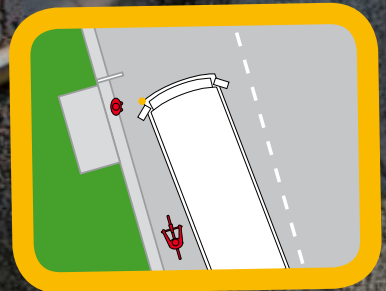
Undertaking

- Don't on a corner or junction!



Bus stops

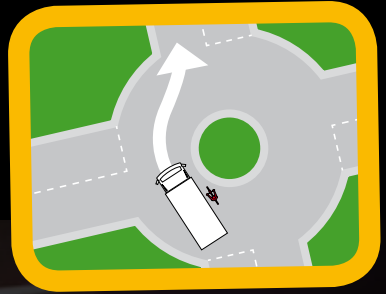
- Never undertake a stopped bus





Roundabouts

- Large vehicles may use a different lane



Bad weather

- Visibility and handling will be affected.



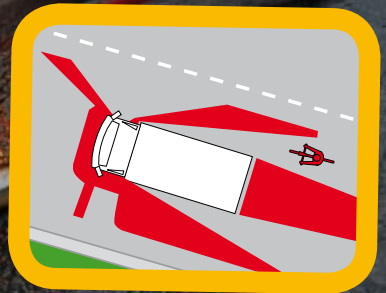
Traffic lights

- Don't move to the front of traffic if lights are about to change



Blind Spots

- Straight line
- Turning



The Bike Station, 250 Causewayside, Edinburgh EH9 1UU
0131 668 1996 www.thebikestation.org.uk

The Bike Station. Registered as Recycle to Cycle Ltd, a charitable company limited by guarantee.
Registered in Edinburgh under number 237798. Scottish charity number SC033703.

Commissioned photography by Kenneth Archbold, KIA Photography.

